

# Which Side Are You On?

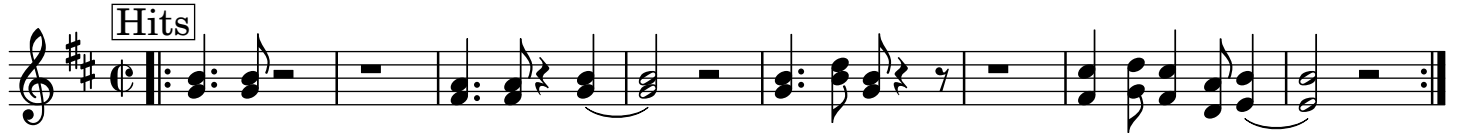
New Orleans 2nd-Line Style

Trumpet/Tenor Sax

Florence Reese, 1931

Structure (played through twice, then repeat Chorus, then stop and play one big end note)

Intro 32 bars (8 bass, 8 drums & bass, 16 with horn hits), Chorus (sung), Verse (sung), Chorus (played), Bridge



## Chorus

Sing through twice  
Hand symbol: Pac-man

*Which side are you on? Which side are you on?  
Which side are you on, now? Which side are you on?*

## Verse

Sing through twice for each of the verses.  
Hand symbol: Two fingers up

### Verse 1.

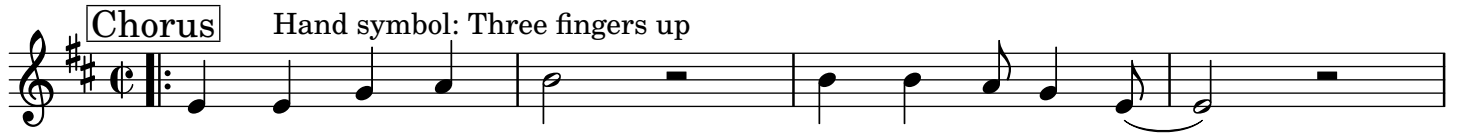
*Storms surge and fires burn  
But you don't hear the call.  
'Cause fossil fuels keep paying you  
Does it weigh on you at all?*

### Verse 2.

*Dirty coal has raised you up  
But we - can - make - you fall  
You picked a war with our generation  
Does it weigh on you at all?*

Play this but try not to drown out the audience who will be singing

Hand symbol: Three fingers up



Which side are you on?

Which side are you on?



Which side are you on, now?

Which side are you on?

## Bridge

Hand symbol: Four fingers up

