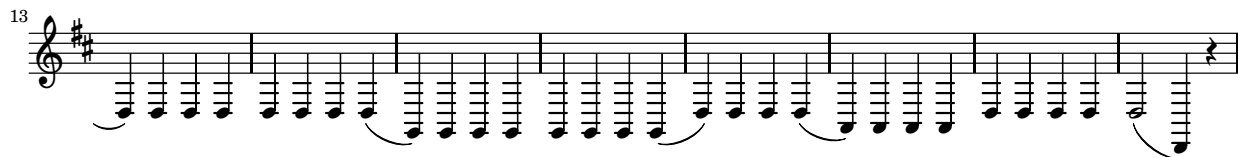
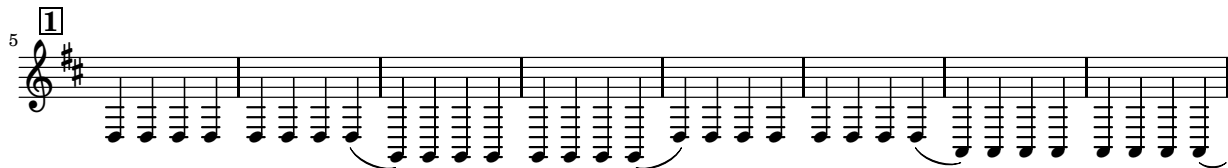
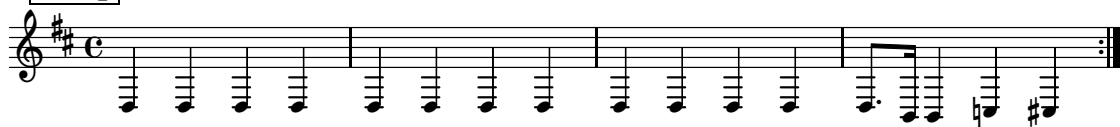


# Nine to Five

E♭ Bass

Dolly Parton

**Vamp**



2

29

33

The image shows a musical score for two staves. The first staff begins at measure 29 and contains four measures of music. The second staff begins at measure 33 and contains five measures of music. Both staves are in treble clef with a key signature of two sharps (F# and C#). The notes are primarily eighth and sixteenth notes, often beamed together. The second staff includes a first ending bracket over measures 35 and 36, and a second ending bracket over measures 37 and 38. The score ends with a double bar line and repeat dots at the end of the second ending.